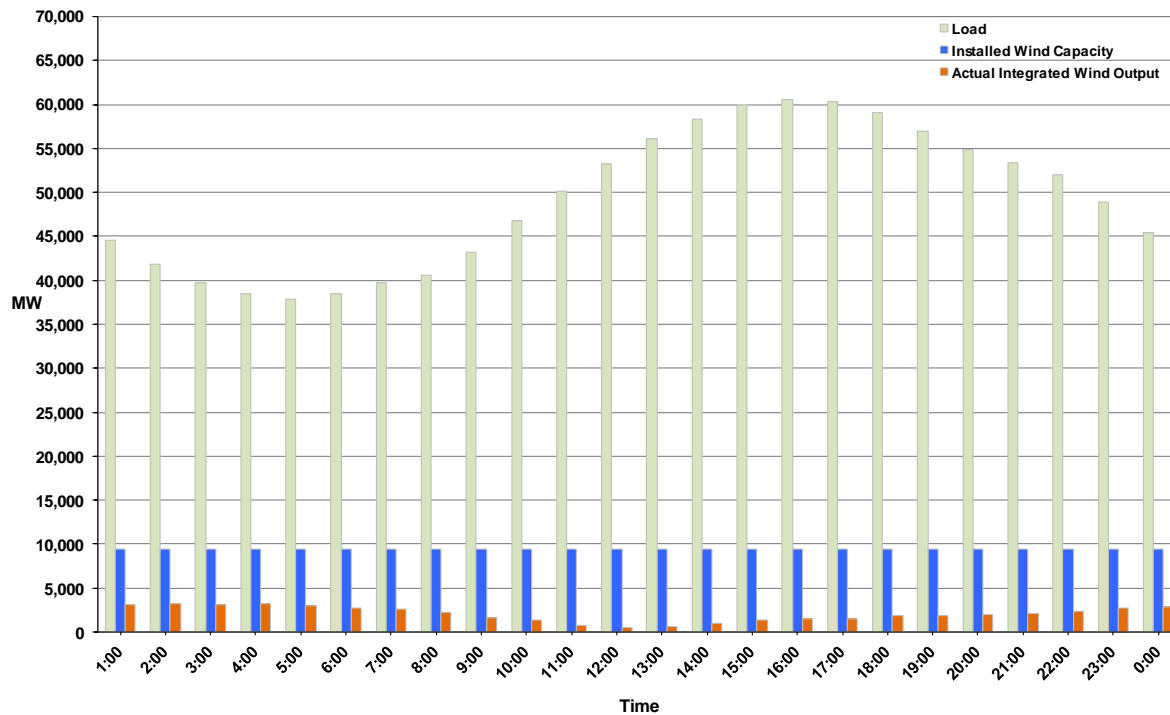




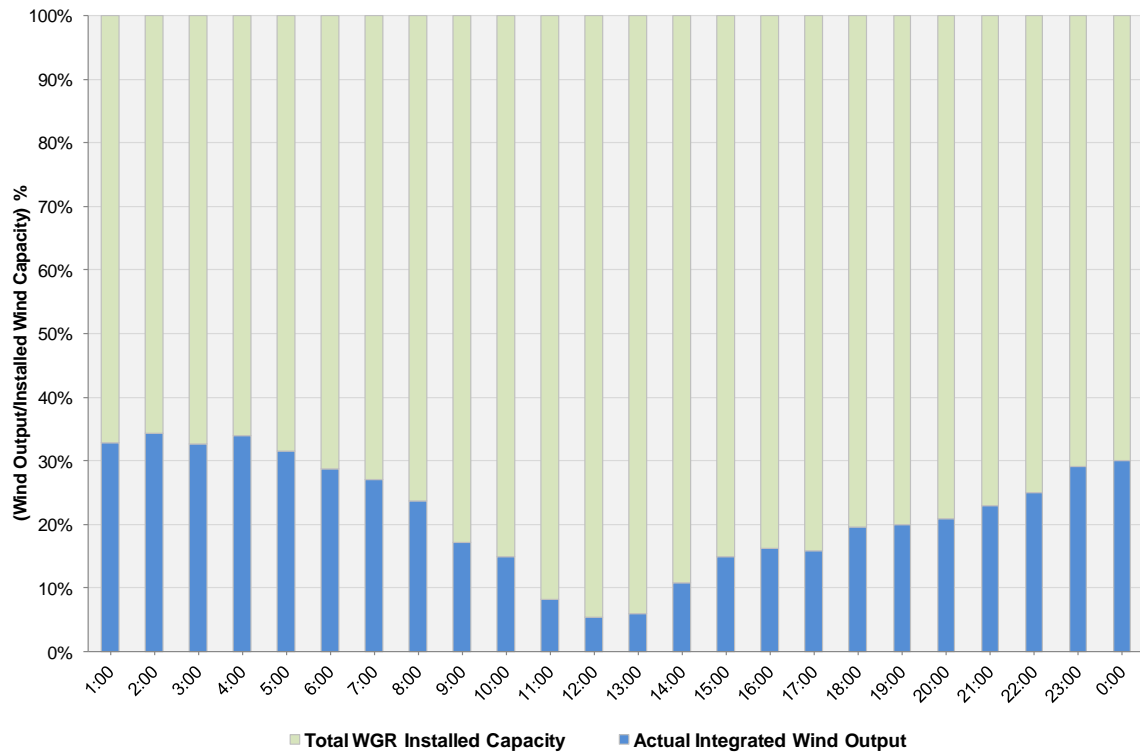
## ERCOT Grid Operations Wind Integration Report: 07/29/11

|                      |                  |
|----------------------|------------------|
| Peak Load            | <b>60,563 MW</b> |
| Load Peak Hour       | <b>16</b>        |
| Wind Record 06/19/11 | <b>7,355 MW</b>  |
| Max Wind Value       | <b>3,300 MW</b>  |
| Wind Peak Time       | <b>01:24:00</b>  |
| Wind Integration %   | <b>7.85%</b>     |

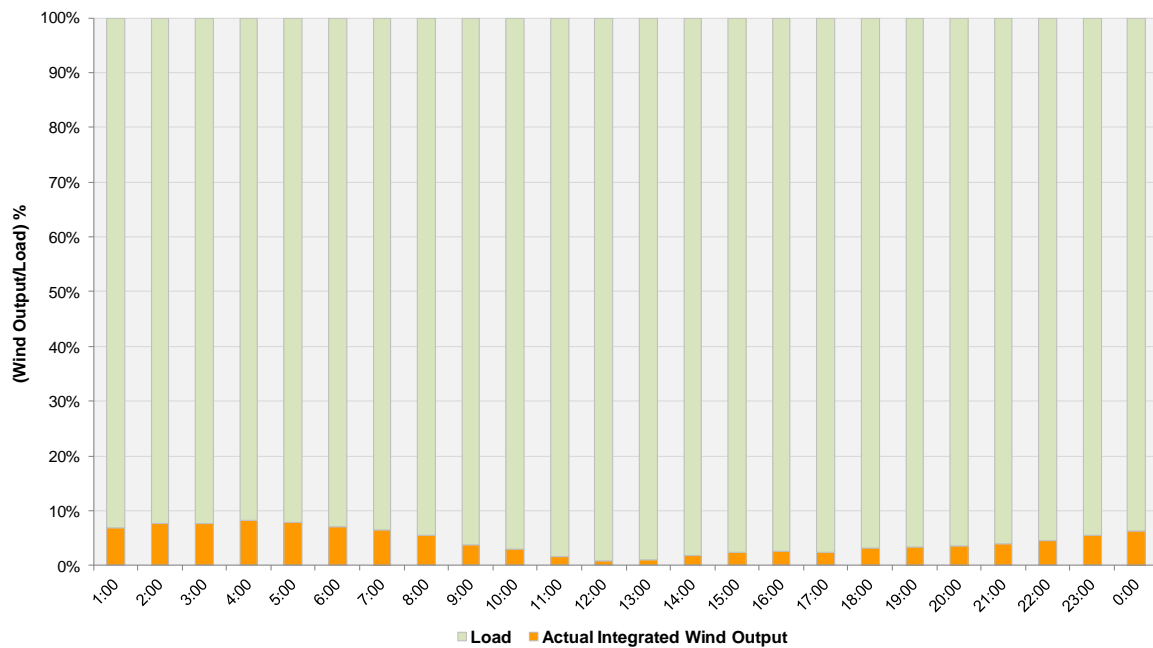
**Hourly Average Actual Load vs. Actual Wind Output  
07-29-2011**



**Actual Wind Output as a Percentage of the Total Installed Wind Capacity**  
**07-29-2011**



**Actual Wind Output as a Percentage of the ERCOT Load**  
**07-29-2011**



ERCOT Load vs. Actual Wind Output 7/22/2011 - 7/29/2011

